

Berea Single-hole Basin Faucet  
11-01

## Installation Instructions



### Tools You Will Need



Adjustable Wrench



Adjustable Pliers



Teflon Tape

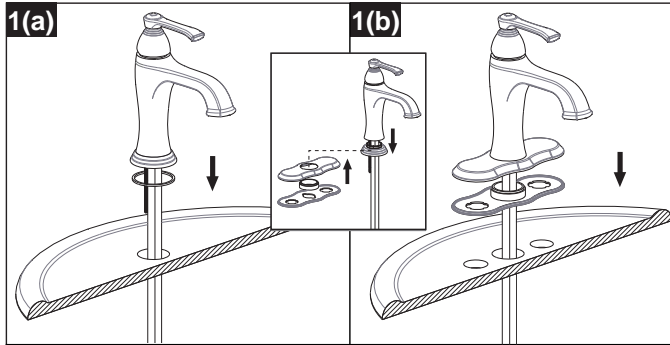
For ease of installation will need:

- To read the installation instructions completely before beginning.
- To read all warnings, care, and maintenance information.

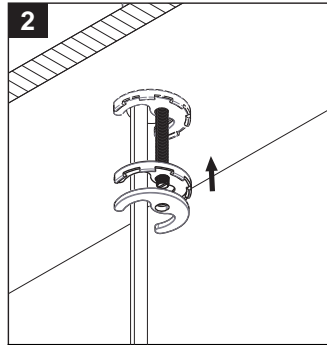
Before beginning installation, check for any damage that may have occurred during transport.

**Note: Damage claims cannot be made during or after installation.**

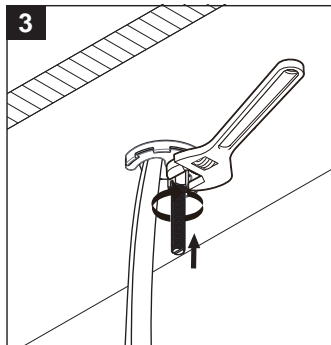
**Installation Instructions**



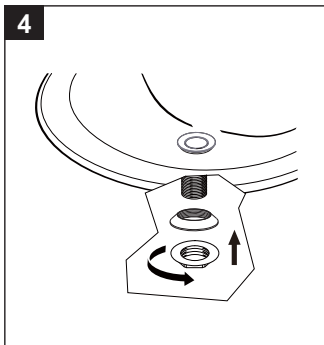
Lower faucet into mounting hole.  
Plate in 1(b) is optional and may be ordered separately.



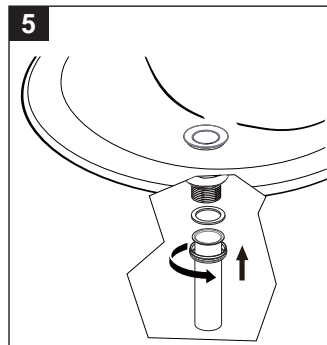
Slide "C" washer onto faucet shank.



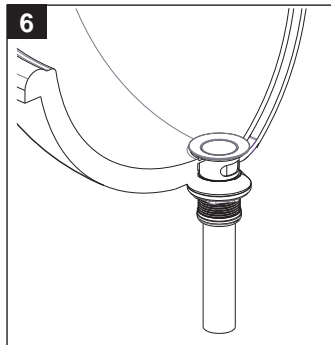
Carefully tighten spout nut to secure faucet.



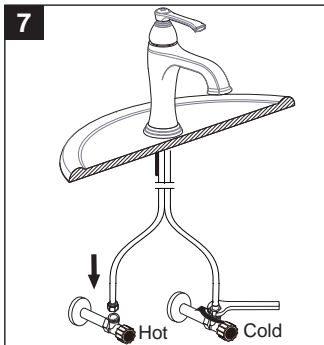
Slide push drain trim and plug into drain hole and secure from below.



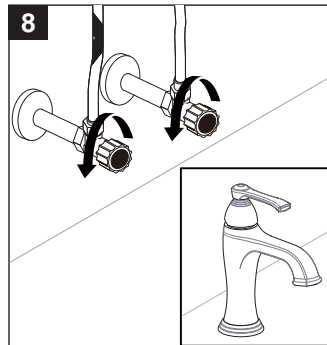
Install the drain tailpiece to the drain plug.



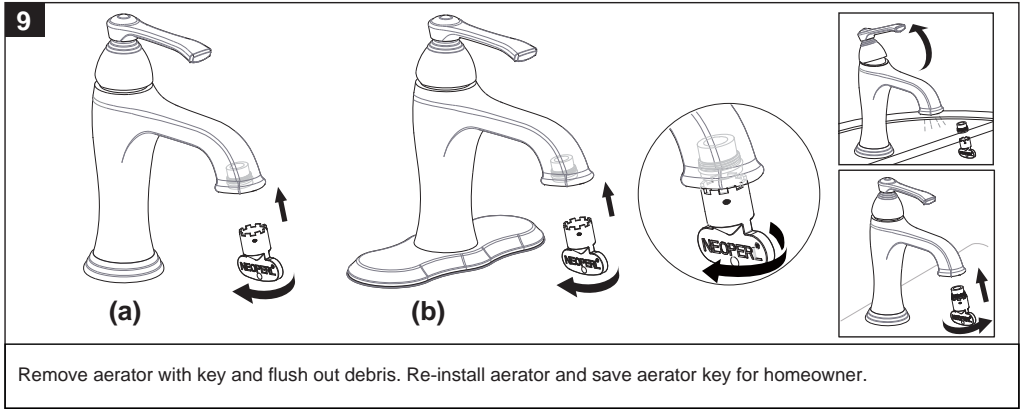
Push drain to test.



Attach water supply lines.



Turn on angle stops and check all connections for leaks.



### Cleaning Instructions

Rinse away any traces of soap and gently dry with a clean, soft cloth after each use. Rinse completely with water and dry any overspray. This will maintain the finish and avoid water spotting.

To remove mineral deposits, use a 50/50 solution of white vinegar and water. Do not allow the solution to soak on the product.

Simichrome Polish® contains a protective film to enhance maintenance and is helpful in preventing water spot buildup. Follow instructions to ensure optimum results.

Never use an abrasive material such as a brush or scouring pad to clean the surface. The use of abrasive cleaners, cleansers or disinfectants will alter the surface finish and void the warranty.

Do not allow certain materials such as toothpaste, cologne, shaving cream, nail polish remover, vinegar, wine, drain and glass cleaners to remain on the surface. Prolonged contact will alter surface finishes and void the warranty.

**We DO NOT recommend using any household cleaners as many can cause damage to the finish.**

Please see the website for care instructions for specific finishes.

### Trouble-Shooting

If you have followed the instructions and your faucet still does not work properly take these corrective steps.

| Problem   | Cause                                    | Action  |
|---|--|---|
| Leaks under spout body                                  | Loose water supply lines                 | Tighten all connections   |
| Aerator leaks or has an inconsistent water flow pattern | Aerator is dirty or mis-threaded         | Remove aerator with key and flush out debris.<br>Reinstall aerator and save aerator key for homeowner |
| Only hot or only cold water is coming out of the spout  | The hot or cold stop valve is not opened | Open the hot or cold stop valves  |
| Handle will not move                                    | Cartridge is dirty or mis-fitted         | Remove, rinse and reinstall cartridge   |

