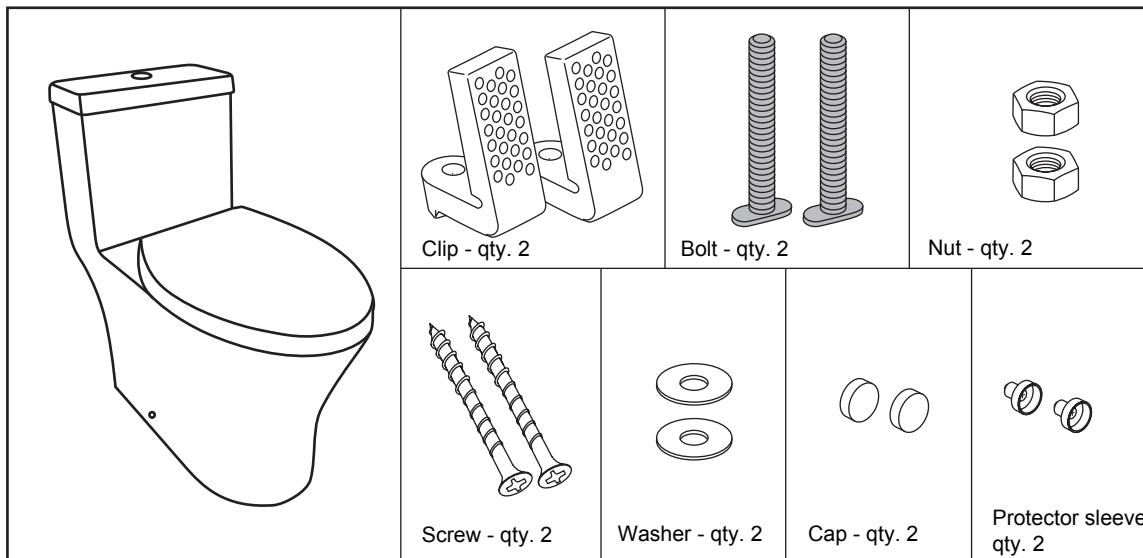


US-PRO9005

Installation Instructions

PARTS SUPPLIED:

Check to make sure all these parts are included in the package:



TOOLS REQUIRED:

- 12" pipe wrench
- 10" adjustable wrench
- Carpenter's Level
- Tape Measure
- Screwdriver
- Putty Knife
- Drill
- Pliers
- For wood floor installation:
- 11/64" drill bit for Mounting Block
- For concrete/tile installation:
- 11/32" drill bit for Mounting Block

MATERIALS REQUIRED:

(Not Included)

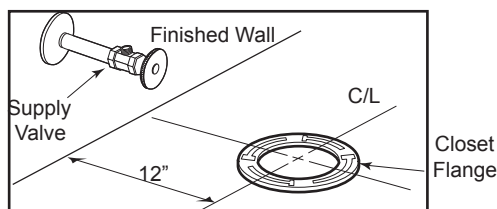
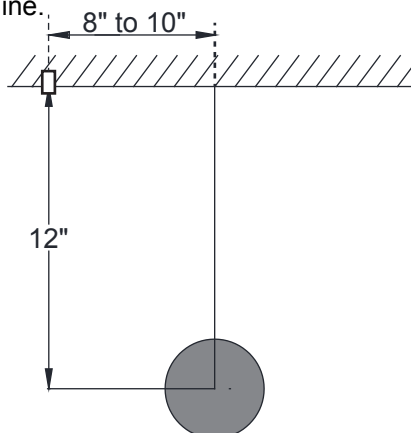
- Flexible Supply Tube / Connector
- Supply Stop Valve
- Mounting (T) Bolts & Nuts (2pc)
- Wax Ring / Seal

BEFORE INSTALLATION:

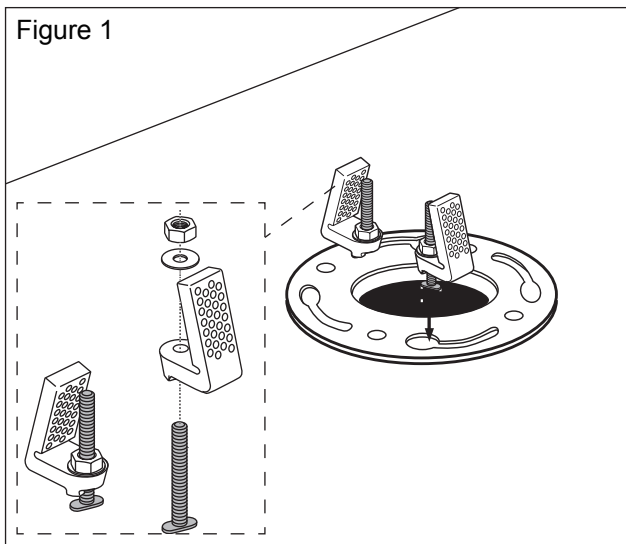
- Check for any damage that may have occurred during transport. **Note: Damage claims cannot be made during or after installation.**
- Read these instructions thoroughly before beginning work and retain for future reference.
- Please leave instructions for customers. These instructions contain maintenance and warranty information.
- Remove the existing toilet. If new construction, purge the supply line.

In order to fit correctly, please check the following dimensions:

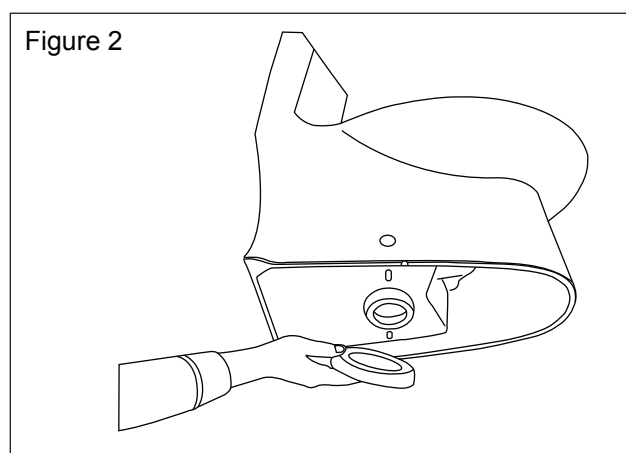
- 1) The distance between the finished wall and the center of the closet flange must be 12".
- 2) The water supply should be approximately 8" to 10" to the left (facing the bowl) from the center line of the closet flange, and approximately 6" above the finished floor.



- 1) Clean any debris out of the closet flange (not supplied), then install the mounting bolts into the slot of the flange head down with the threaded shank of the bolt pointed upward as shown (See figure 1).
Slide each bolt until the end of slot.



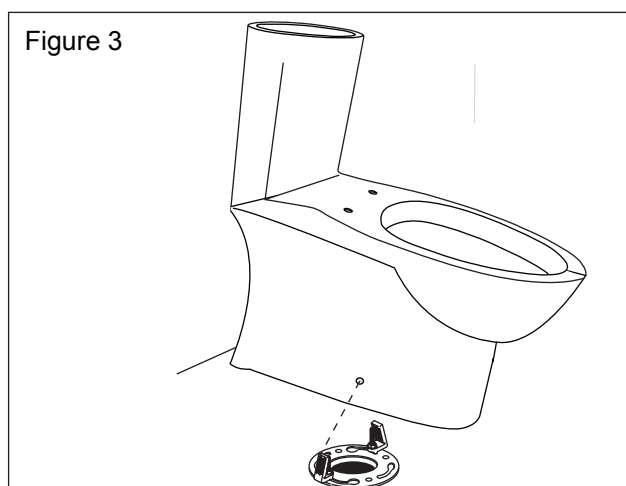
- 2) Firmly press a new wax seal onto the circular recess around the outlet opening (See figure 2).



- 3) Place the toilet bowl over the socket and mounting blocks (See figure 3).

CAUTION:

- To prevent water and odor leakage, please ensure that the wax seal is fitted properly between the socket and the flange. Do not overtighten the nuts, as damage to the plastic parts may result.

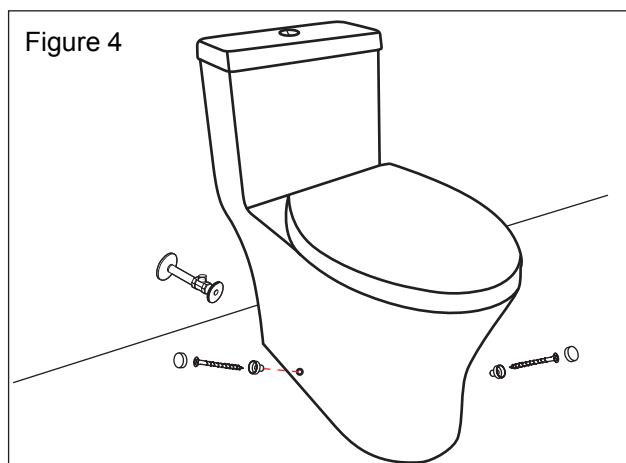


- 4) Fit protector sleeves and install side screws.
Cover the screw head with the provided screw-cap (See Figure 4).

CAUTION:

- In order to prevent leakage, be sure to insert the toilet all the way into position.

- 5) Carefully place the lid on top of the tank, making sure that the push rod colors match the flush valve buttons; the grey flush valve button is for a full flush and the blue button is for a half flush.



Adjusting the Push Button Rods

After making sure the push buttons are installed correctly, place the lid on the tank.

If rod(s) is too long, water will keep running in the toilet.

- 1) Loosen the lock nut(s) counterclockwise.
- 2) Turn the rod(s) clockwise to shorten them.
- 3) If the rod is too long by adjusting, cut the rods one segment at a time until it is possible to replace the lid. (See figure C)

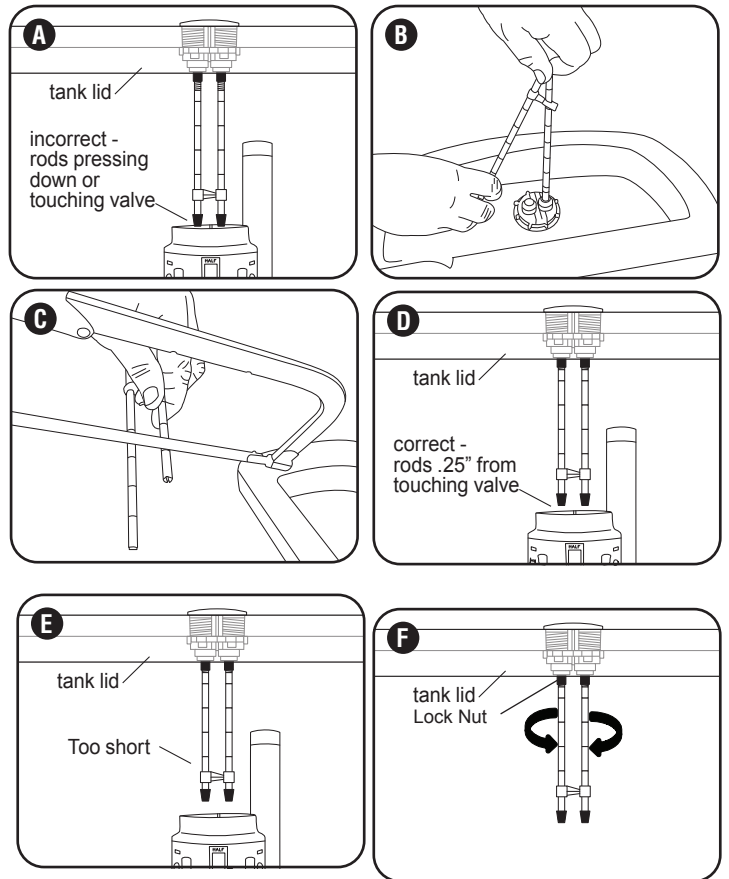
If the button(s) is too low (See figure E):

- 1) Loosen the lock nut/s counterclockwise.
- 2) Turn the rod(s) counterclockwise to lengthen (each full turn is 1mm).
- 3) Place the lid on the tank to check the buttons.

Adjust the rods as necessary by turning the rod 1 full turn; to lengthen, turn the rod counterclockwise; to shorten, turn the rod clockwise.

The rods should NOT be touching the top of the flush valve. If the rods do not activate the valve properly, use the fine adjust by rotating the rod counter clockwise to lengthen the rod 1/4" at a time until the rods activate the valve without touching the valve.

When the adjustment is completed, tighten the lock nut to secure it.

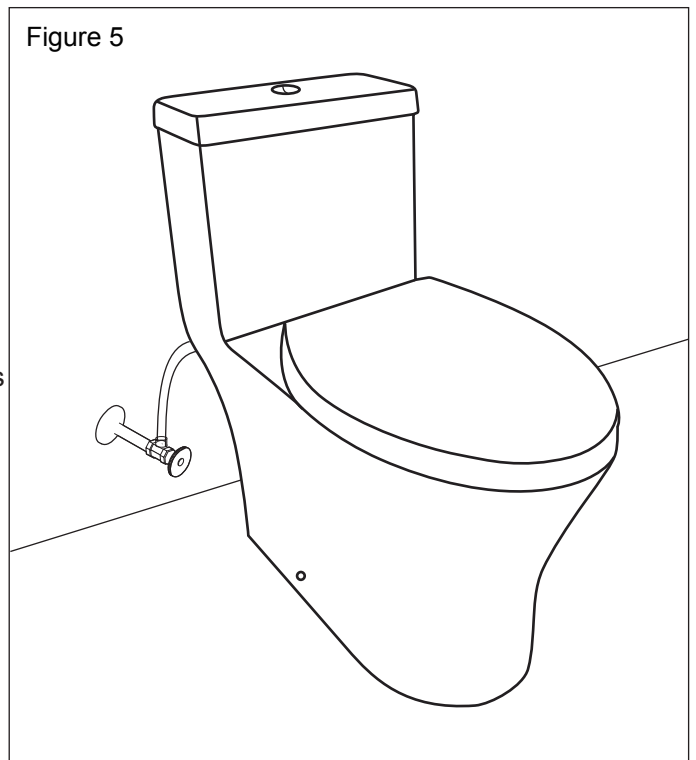


After Installation/Adjustment

Flush the toilet two to three times to confirm there is no water leakage and that the push mechanism is working properly.

- 6) Connect the opposite end of the water supply hose to the angle stop (See figure 5). A flexible supply hose is recommended. Hand tighten only - do not use plumbers putty or other sealants. Open the supply valve and flush the toilet several times. Check all the connections for leaks and periodically afterwards following the installation. Minimum supply pressure is 2.6psi.

Figure 5



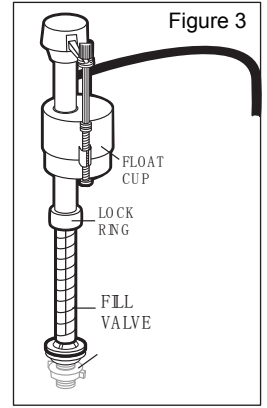
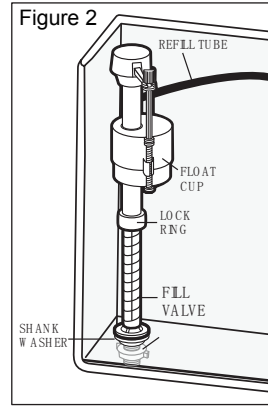
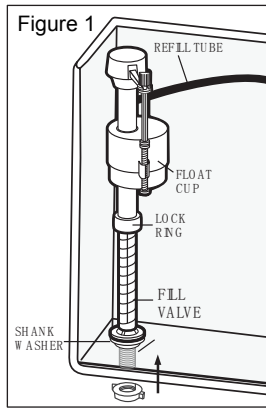
Fill Valve Installation Instruction

Replacement Installation

- 1) Shut off the water supply. Flush the toilet and remove any remaining water from the tank. Remove the old fill valve.
- 2) Install new fill valve by sliding the threaded portion of the shaft through the hole in the bottom of tank.
- 3) Thread mounting nut onto exposed shaft under the tank/bowl and tighten nut.

WARNING! Do not over-tighten.

- 4) Connect the water supply.



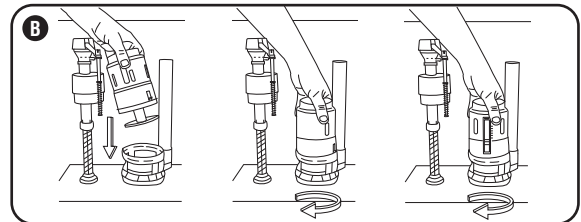
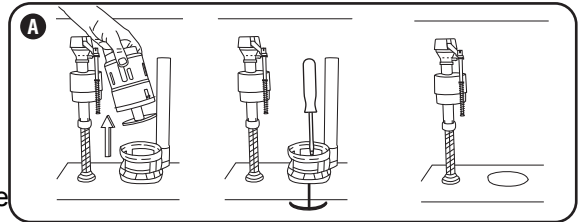
Water Level Adjustment

- 1) Loosen the lock ring (see figure 3)
Pull up the valve and set it to the desired water level, then turn it clockwise until the valve snaps into the locked position.
- 2) Turn on the water supply.

Flush Valve Installation Instruction

Replacement Installation

- 1) Turn off water supply and flush the toilet.
- 2) Remove the tank lid and place it upside down on a clean surface.
- 3) Note the orientation of the flush valve for reassembly.
- 4) Screw down the flush valve body.
- 5) With a screw driver to loosen the screw on the flush base, remove the flush base.
- 6) Install the new flush valve base into the pan.
- 7) Install the flush valve body back on the base.
- 8) Rotate the flush valve so that the white button is on the left and the blue button is on the right.
- 9) Carefully install the tank lid back on the tank.
- 10) Flush the toilet several times using each push button to verify proper operation. Check for leak

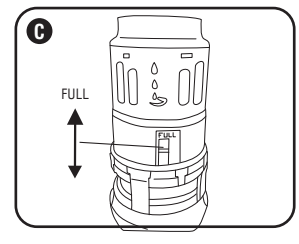
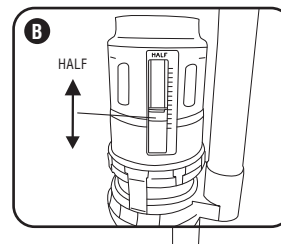


Water Level Adjustment

A. Consult the included chart to find your toilet model and the settings for the full and half flush settings.

B. Adjust the half flush float. Locate the BLUE float and scale marked at the top with the word "HALF". While pressing firmly on the gray tab, slide the float up or down until it reaches the setting in chart.

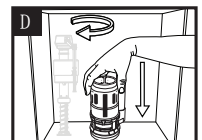
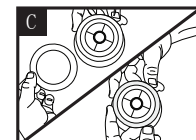
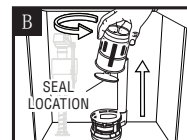
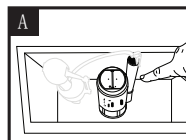
C. Adjust the full flush window. Locate the GRAY adjustment and scale marked at the top with the word "FULL". Slide the gray tab up or down until it reaches the setting in chart.



FULL Flush Window	HALF Flush Window
#3	#6

Replacing the Master Seal

- 1) Note position of half and full flush paddles on the top of the flush valve (Figure A).
- 2) Holding the valve body, rotate the valve until it is possible to remove the valve body from the shank (Figure B).
- 3) Holding the edge of the silicone seal, pull the seal and peel away from the sealing piston - discard the old seal.
- 4) Place the inside edge of the replacement seal against the inside edge of the sealing piston (Figure C).
- 5) Holding the edge of the replacement seal, pull until the seal installs onto the piston.
- 6) Inspect the seal to make sure the entire inner edge of the seal is making contact with the inner edge of the sealing piston.
- 7) Replace the valve body in the shank, and rotate the valve until the position of the half and full flush paddles are returned to their original position (Figure D). Replace the lid, turn on the water supply.



CLEANING INSTRUCTIONS

A mild detergent, warm water and a soft cloth will remove normal dirt and soap accumulations from surfaces. Soft abrasive cleaners may be used on vitreous china. Never use abrasive cleaners without water. Do not use caustic cleaners or disinfectants as they can alter the surface finish and void the warranty.

Use toilet bowl cleaners on the inside of the bowl only. Remove any splashes of cleaner solution from plastic or plated surfaces immediately.

Do not use in-tank cleaners as they can seriously damage the fittings in the tank. This damage could cause leakage and result in property damage. **Crosswater London** shall not be responsible or liable for any damage that occurs as a result of the use of in-tank cleaners.

Do not allow certain materials such as toothpaste, cologne, shaving cream, nail polish remover, vinegar, wine, drain and glass cleaners to remain on the surface. Prolonged contact can alter surface finishes and void the warranty.

CARE OF TOILET SEATS

Use a soft, damp cloth and a mild soap such as dishwashing liquid to clean the seat. Rinse the seat and dry with a soft towel.

Do not use abrasive cleaners as they will scratch and dull the surface. Do not allow cosmetics or abrasive chemicals to come in contact with the toilet seat.